

2930 SILVERADO TRAIL NORTH, ST. HELENA

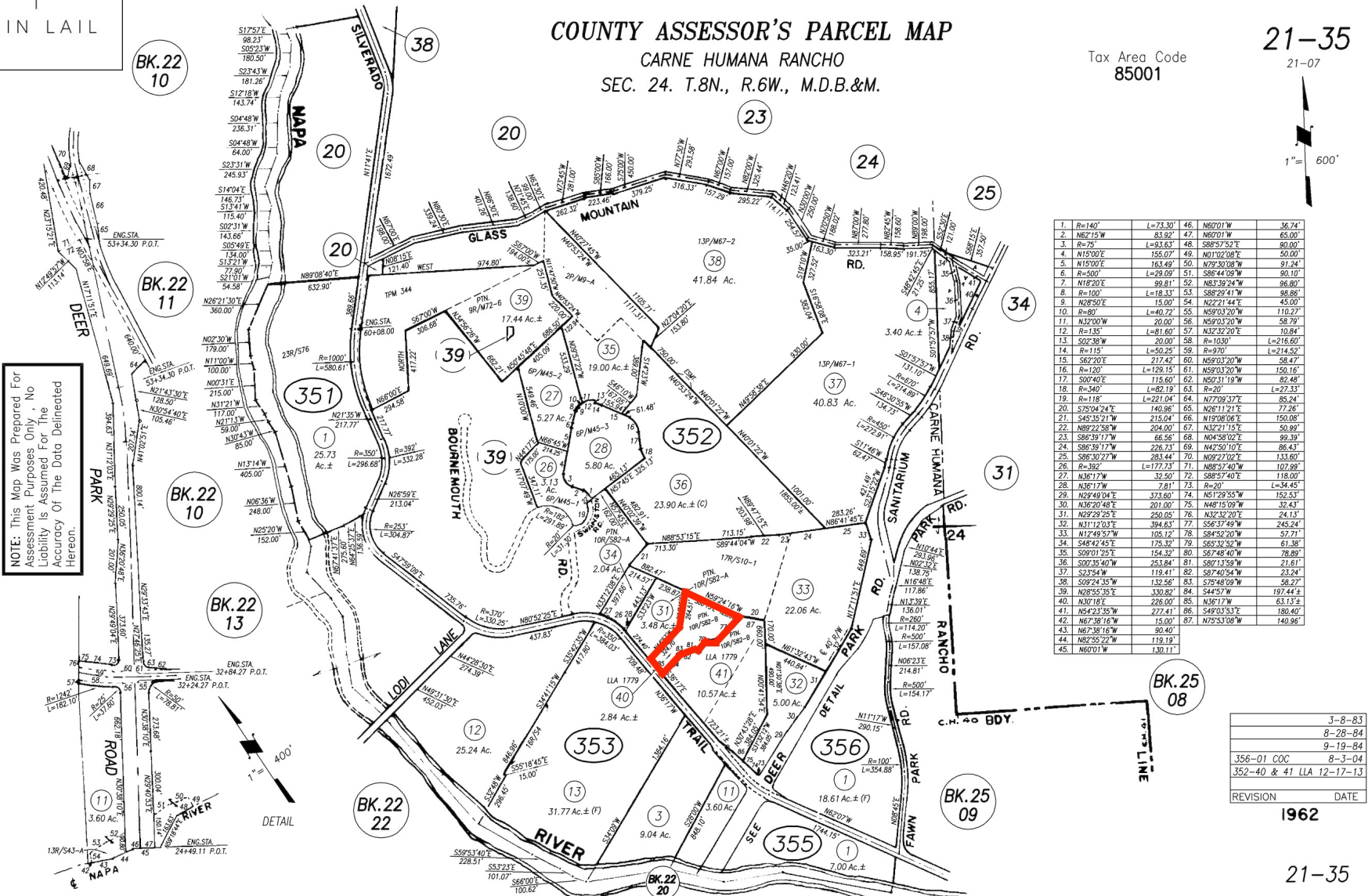
COUNTY ASSESSOR'S PARCEL MAP CARNE HUMANA RANCHO SEC. 24. T.8N., R.6W., M.D.B.&M.

Tax Area Code
85001

21-35

21-07

1" = 600'



NOTE: This Map Was Prepared For Assessment Purposes Only. No Liability Is Assumed For The Accuracy Of The Data Delineated Hereon.

1. R=140'	L=73.30'	46. N60°01'W	36.74'
2. N62°15'W	83.92'	47. N60°01'W	65.00'
3. R=75'	L=93.63'	48. S88°57'52"E	90.00'
4. N15°00'E	155.07'	49. N01°02'08"E	50.00'
5. N15°00'E	163.49'	50. N75°30'00"W	91.24'
6. R=500'	L=29.09'	51. S86°44'09"W	90.10'
7. N18°20'E	69.81'	52. N83°39'24"W	66.80'
8. R=100'	L=18.33'	53. S88°29'41"W	98.86'
9. N28°50'E	15.00'	54. N22°21'24"E	45.00'
10. R=80'	L=40.72'	55. N59°03'20"W	110.27'
11. N32°00'W	20.00'	56. N59°03'20"W	58.79'
12. R=135'	L=81.60'	57. N32°32'20"E	10.84'
13. S22°36'W	20.00'	58. R=103.90'	L=216.60'
14. R=115'	L=50.25'	59. R=97.00'	L=214.52'
15. S62°20'E	217.42'	60. N59°03'20"W	58.47'
16. R=120'	L=129.15'	61. N59°03'20"W	150.16'
17. S04°40'E	115.60'	62. N50°31'19"W	82.48'
18. R=300'	L=82.19'	63. R=20'	L=27.33'
19. R=118'	L=221.04'	64. N77°08'37"E	85.24'
20. S75°04'24"E	140.96'	65. N26°11'21"E	77.26'
21. S45°35'21"W	215.04'	66. N19°08'06"E	150.08'
22. N89°22'58"W	204.00'	67. N32°21'51"E	50.80'
23. S86°39'17"W	66.56'	68. N04°58'02"E	99.39'
24. S86°39'17"W	226.23'	69. N42°50'10"E	86.43'
25. S86°30'27"W	283.44'	70. N09°27'02"E	133.60'
26. R=392'	L=77.23'	71. N86°57'40"W	102.80'
27. N36°17'W	32.50'	72. S88°57'40"E	118.00'
28. N36°17'W	7.81'	73. R=20'	L=34.45'
29. N29°49'04"E	373.60'	74. N51°29'55"W	152.53'
30. N36°20'48"E	201.00'	75. N48°15'08"W	32.43'
31. N29°29'25"E	250.60'	76. N32°32'02"E	24.15'
32. N31°12'03"E	394.63'	77. S56°37'49"W	245.24'
33. N12°49'37"W	105.12'	78. S84°52'40"W	57.71'
34. S48°42'45"E	175.32'	79. S55°32'32"W	61.38'
35. S09°01'25"E	154.52'	80. S57°48'40"W	78.80'
36. S00°35'40"W	253.84'	81. S80°13'59"W	21.61'
37. S23°54'W	119.41'	82. S87°40'54"W	23.24'
38. S09°24'35"W	132.26'	83. S75°48'09"W	58.27'
39. N26°55'35"E	330.82'	84. S44°57'W	197.44'
40. N20°18'E	228.00'	85. N36°17'W	63.13'
41. N54°23'35"W	277.41'	86. S49°03'53"E	180.40'
42. N67°38'16"W	15.00'	87. N75°53'08"W	140.98'
43. N67°38'16"W	90.40'		
44. N28°52'27"W	119.19'		
45. N60°01'W	130.11'		

	3-8-83
	8-28-84
	9-19-84
356-01 COC	8-3-04
352-40 & 41 LLA	12-17-13
REVISION	DATE

1962

21-35